

#### Roughing In for Bracket and Waste Trap Positions

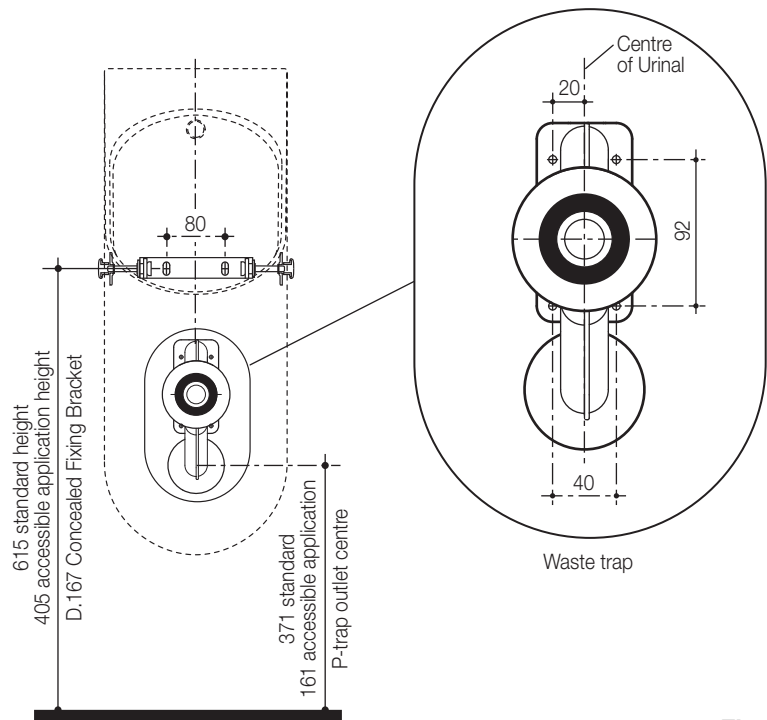


Fig. 1

#### 'P' Trap Roughing in for Inlet Pipe and Waste Pipe

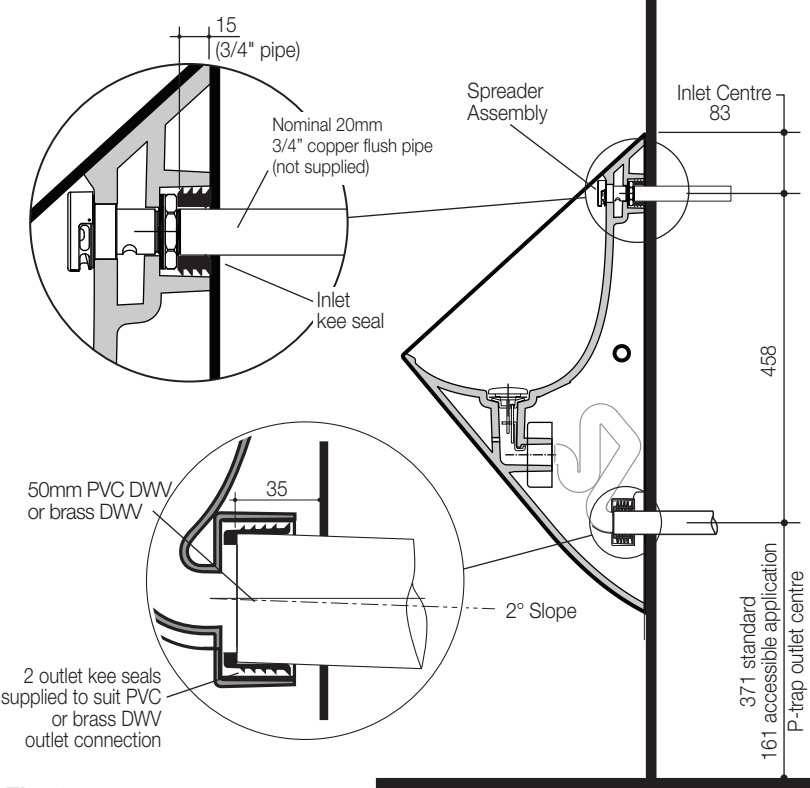


Fig. 2

#### Cube 0.8L Cleanflush® Urinal

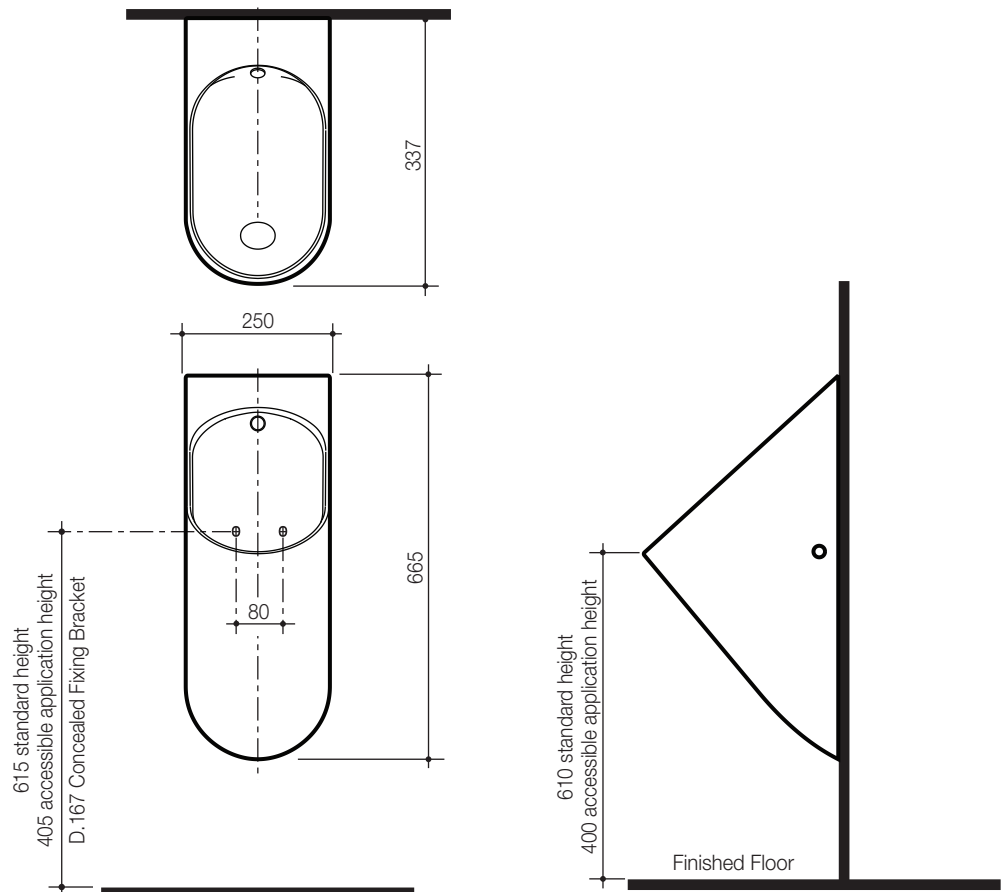


Fig. 3

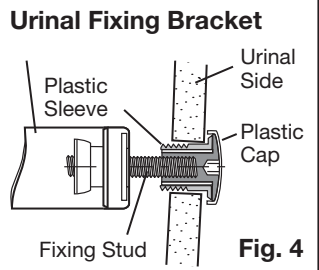


Fig. 4

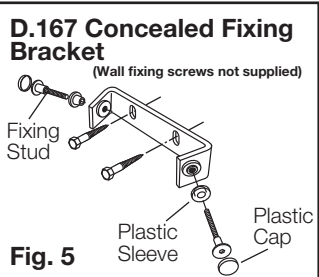


Fig. 5



#### BEFORE YOU BEGIN

**CAUTION - FRAGILE.** To avoid breakage and possible injury, handle with care. Do not drop or hit with hard objects.

#### ROUGHING IN FOR INVISI II CISTERN

For in ceiling installations using the Invisi II cistern the Ø18mm restrictor must be used along with 20mm copper flush pipe. For standard inwall & induct installations, the 18mm restrictor is not required.

#### ROUGHING IN FOR THE BRACKET AND TRAP POSITIONS

For timber stud walls the noggings and studs must be positioned at a height to allow for the location of the fasteners. The centre position is detailed in Fig. 1.

#### ROUGHING IN FOR THE INLET PIPE AND WASTE PIPE

Accuracy is required between the two pipes as detailed in Fig. 2.

#### 'P' TRAP URINAL INSTALLATION

- 1- Ensure the roughing in details have been confirmed on the wall as detailed in Fig. 1 & 2. The 3/4" pipe must be cut square to ensure proper sealing with the kee seal.
- 2- Fit the outlet kee seal over the waste pipe spigot protruding from the wall.
- 3- Gently push the urinal waste trap onto the keeseal using a soap solution lubricant.
- 4- Centre the waste trap in the vertical position and mark the four screw holes.
- 5- Secure the waste trap onto the wall using suitable fasteners.
- 6- Fix the Urinal Fixing Bracket into position as detailed Fig. 1.
- 7- Fit the inlet kee seal on to the 3/4" pipe ensuring that the 3/4" pipe is aligned with the kee seal. (Use soap solution lubricant on the seals).
- 8- Push the urinal gently onto the 3/4" pipe while engaging the outlet into the waste trap seal.
- 9- Secure the urinal onto the concealed bracket using plastic fixing sleeves into holes in the urinal, screw the two threaded studs into the bracket, as detailed in Fig.4. Tighten fixing heads with a 7/32" Allen key (not supplied) to mount urinal to wall while ensuring level.

#### IMPORTANT - DO NOT OVER TIGHTEN, AS THIS MAY CRACK THE URINAL SIDE.

Snap on plastic cap, as detailed in Fig. 4.

- 10- Caulk with an acetic cured silicone sealant/caulking as required.

Installation must be in accordance with AS/NZS 3500.2.

#### IMPORTANT:

The product is subject to normal wear. All components should be checked on a regular basis and replaced as needed to maintain the urinals performance. All service to be performed by an authorised service person.

#### Cleaning and Maintenance

To preserve the glazed surface, clean with a mild household detergent or warm soapy water.