

CAROMA

Revision: 0

Date: 07/02/2025

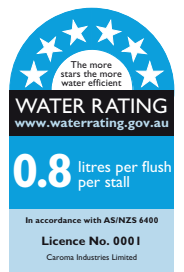
Supersedes all previous issues

Cube Cleanflush® 0.8L Electronic Series II Activation Urinal

Smart Demand 'Urine Sensing' Flushing System
with Vitreous China 0.8L Rimless Wall-Hung Urinal



cleanflush



Cube Cleanflush® Electronic Series II



Pictured with Spreader Cap
in Stainless Steel

Other Spreader Cap Colour Options:



Black Brushed Brass Gunmetal White

Ideal for general commercial washroom applications where water conservation is a priority, the **Cube Cleanflush®** Electronic Urinal boasts the maximum WELS 6 star rating with a highly efficient flush of 0.8L. Featuring our signature Caroma **Cleanflush®** rimless design, coupled with superior hydraulic flushing performance, this ceramic urinal is the perfect addition to modern commercial washrooms. Each urinal features Caroma **GermGard®** antimicrobial protection, integrated into the glaze of the bowl via a unique formula that kills a minimum of 99% bacteria it comes into contact with, ensuring a clean and hygienic solution.

Inlet: Back inlet for concealed nominal 20mm dia. sparge pipe and compression rubber fitting.

Outlet: The urinal trap is connected to wall waste pipe which allows for a simple push on urinal connection.

Inwall: Automatic urinal flush system suitable for minimum cavity thickness of 100mm.

Induct: Automatic urinal flush system.

Inceiling: Automatic urinal flush system.

Electronic Urinal Suite: Wall mounted urinal fit-out kit Code No.678820W for AU and 678821W for NZ; Rough-in kit Code No.678803; Caroma Smart Command® Rough-in kit Code No.678809.

Fitting: Vandal resistant grate option Code No.686072W.

Flush Control Mechanism: Smart demand 'Urine Sensing' operation with an integrated smart logic system, detects user and determines flush mode accordingly. The flush duration is adjustable to allow for the accurate determination of flush volume at varying pressures.

Stadium operation: 5 or more uses with an interval of less than 60 seconds = 1 flush every 3 minutes. Automatically reverts to normal usage at non peak periods.

Smartflush: Water Saving - Adaptive Flush Technology: The unit will monitor usage and during normal usage frequency (less than once every 10 mins), the unit will flush after every use. If a higher usage frequency is detected, the unit will flush once after the second use, after which the unit will not flush again for a period of one hour or after 20 uses (whichever comes first). The unit will then automatically revert to normal mode and continue to monitor usage.

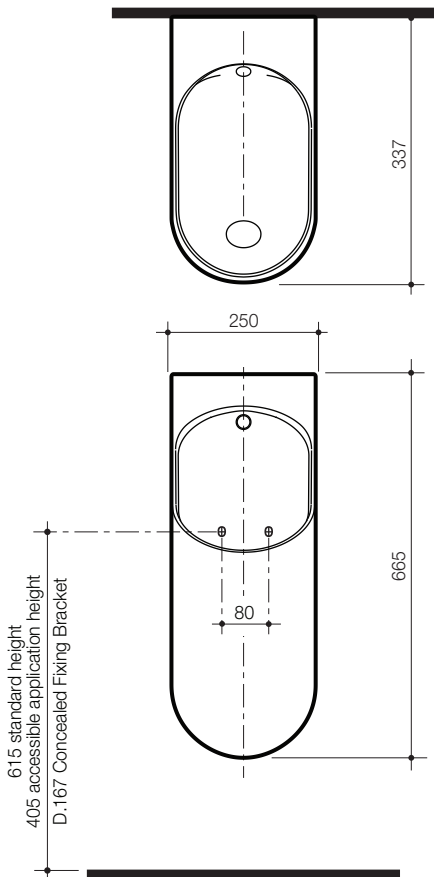
Hygienic Flush: Hygienic flush every 24 hours prevents the trap seal from drying out.

Electronic Valve: The operating voltage of the valve is 6 volts DC. The operation flow pressure of the valve is 300 to 500 kPa (30 to 50 metres head) with a minimum flow to the valve of 18 litres / minute. The valve incorporates an integral airbreak system and stop cock.

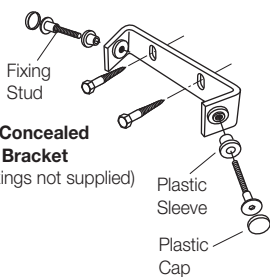
Electronics: Supply voltage to the system is 240V AC 50Hz. Operating current 6 volts DC.

Installation: For general connection install a plug socket 240V AC adjacent to the control box to local code requirements. Provide conduit without kinks to connect the sensor cable to the control box. 3.5m of sensor cable supplied as standard. Minimum supply diameter of nominal 20mm is required to the valve. The urinal must be installed in accordance with the AS/NZS 3500 Plumbing requirements. Local Authorities have varying requirements.

All dimensions are in millimetres and are subject to normal manufacturing variations.
Caroma pursues a policy of continuing improvement in design and performance of its products.
The right is therefore reserved to vary specifications without notice.



D.167 Concealed Fixing Bracket
(wall fixings not supplied)

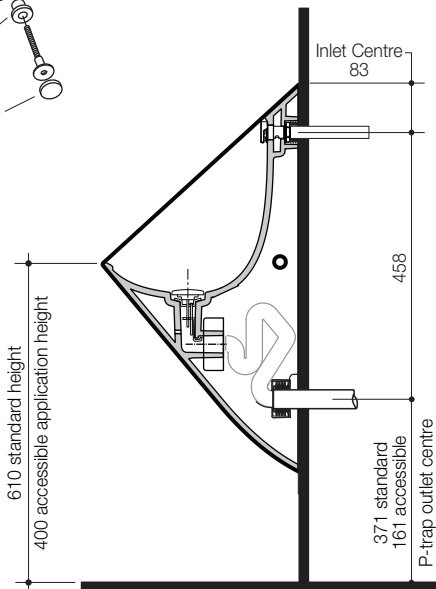


Cube Cleanflush™ 0.8L Electronic Urinal with GermGard®

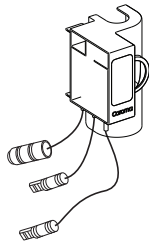
	Code No.
White	678820W

Cube Cleanflush™ Urinal Spreader Cap

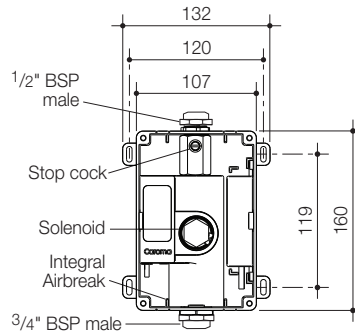
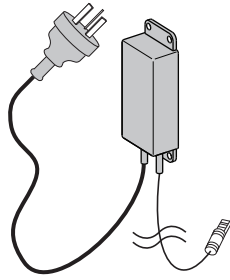
	Code No.
Stainless Steel	687099SS
Brushed Brass	687099BB
Gunmetal	687099GM
Black	687099B
White	687099W



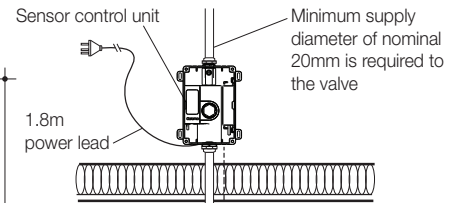
Sensor Control



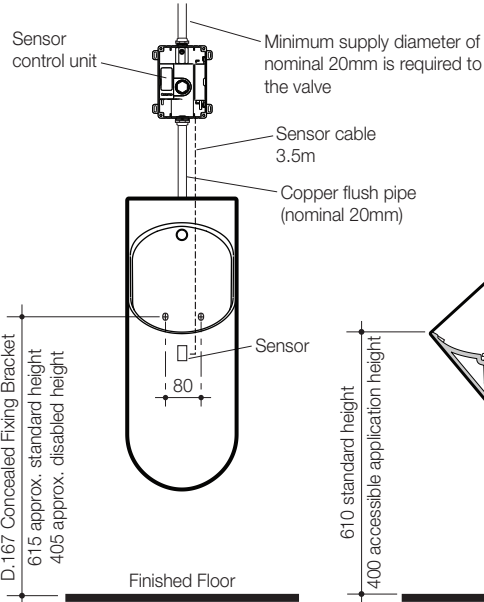
Power Supply Unit



Inceiling Installation



Inwall Installation



Induct Installation

